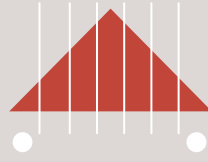


# Milton Studio News

Issue 23

Winter 2013-14



## Editor's Comment

Welcome to our 23rd issue of James F Stephen Architects' newsletter. As I look at a blank page I initially wonder "what do I tell you about" then as the newsletter gains momentum it becomes "what do I leave out"!

The good news is that our Aberdeen clients are appreciating having us based there and we are pleased to be assisting the Diocese of Aberdeen with various remedial works. Fred now sits on their Fabric and Building Board to offer advice just as he has done with the Diocese of Dunkeld for over 20 years. Doug is involved in a number of Aberdeen church conservation projects through this link.

Serendipity and opportunity are key. We had never built a church until we built St Anthony's in Kirriemuir which won an RIAS Award. We had never built sheltered housing till we designed Servite Housing in Alexander Street, Dundee which again won numerous awards. These buildings have stood the test of time and the two satisfied clients of these projects are only examples of how a fresh vision can bring both excitement and new ideas resulting in a finished project that exceeds client expectations. This is one of our main practice aims.

The past five years have been challenging however as we look forward to a New Year in 2014 we are already seeing some green shoots of recovery. In the latter months of 2013 the number of new enquiries has been growing and existing clients are progressing with projects previously 'on hold'. Therefore we are positive that we have the right team in place and we continue to identify ways to eliminate waste and make best use of all our resources. These increased efficiencies will stand us in good stead to grow and continue to provide an excellence of service to all our clients.

## Patron, Sir Menzies Campbell at Homelands Trust Development

Work has recently begun on an exceptional development at Homelands, Lundin Links, Fife. The original mansion (now demolished) with extensive grounds was left, along with a substantial legacy, by local lady Miss Isobel Paxton, to the Fife branch of the MS Society for the benefit of MS sufferers in Fife. Pictured right is our Partner, David Stephen welcoming Sir Menzies Campbell, CH CBE QC and MP for NE Fife to the 'sod cutting' at the commencement of the construction stage. David is accompanied by Dr Larry Rolland, past president of both the RIAS and RIBA and patron/client representative of the Homelands Trust Fife. The Trust has commissioned JFSA as architects and project design team leaders. The development consists of four purpose built, wheelchair-accessible, self-catering luxury cottages specifically designed to meet the needs of people with a range of disabilities and long-term health conditions. These cottages and the associated unique drop-in "Paxton Centre" are being built in the mature woodlands at the south end of Homelands. The centre is sited on the level plateau at the middle of the site and the cottages are stepped for privacy and all oriented to maximise the panoramic views over the local golf course and the River Forth beyond. The project is on target and on budget and due for completion in Summer 2014.



## Recently Completed



- Servite House, Dundee -



- Elmgrove, Dundee -

Alterations at Servite House, Dundee for Caledonia Housing Association are complete; projects at Maxton Road, Crieff and Elmgrove, Dundee were completed in October 2013 for Hillcrest Housing Association. Recently completed is a project for our long standing clients, the University of Stirling, to form specialist research areas within an existing building for the Faculty of Aquaculture. The works involved the creation of controlled laboratory space with ancillary facilities.

We have just completed the final inspection on the facade replacement at St Gerard's, Bellshill for the Diocese of Motherwell. The project involved the removal of the existing damaged facade works and replacement with new materials. JFSA carried out a detailed design exercise and zinc was chosen as the material for the works. The traditional zinc has been detailed in a contemporary modern way to change the whole aesthetic of the building.

## Feasibility Studies



- Kippford Marina -

Feasibility Studies are being undertaken for a potential marina development in Dumfries & Galloway; new hotel in Dundee for Muirfield Contracts; warehouse facilities for A G Barr, Forfar.

## Planning Stage

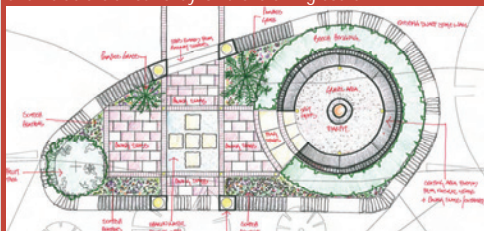
A proposed residential conversion of a Category B listed grain mill which dates from late 18th Century at Milton of Ogilvie is underway. Planning applications have been submitted for a new bore hole for A G Barr, Forfar and Braemar Highland Games Centre. Outline planning approval was received for a site in Invergowrie, which has now been sold on with the approval. Pre-application has been submitted for a listed building in Glamis. Following discussions with the local Council, it is expected that a Flood Risk Assessment and Protected Species report will be necessary to take the application further. We have also produced a pre-application consultation report for a Housing Development in Stonehaven.

## At Design Stage



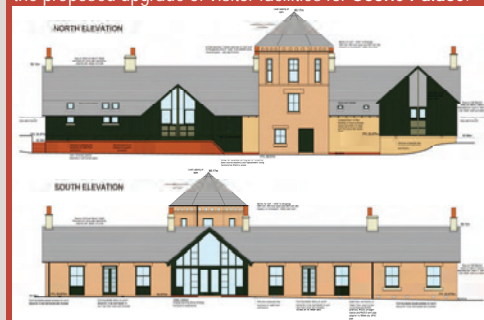
- G S Brown : Kirkton of Fetteresso House Type -

Housing for G S Brown in Stonehaven; relocation of offices for A G Barr, Forfar; a landscape proposal at Letham Grange, Arbroath; and an office fit-out for Keep Scotland Beautiful Charity at Castle Business Park for Stirling Council and Valad are all currently on the drawing board.



## Building Warrant

Projects which have received Building Warrant approval include: 71 warrant amendments to student accommodation in Dundee for Crosslane Student Accommodation Ltd; alterations & refurbishment at Coldside Parish Church, Dundee; Balgowan Court, Dundee for Bield Housing & Care. A new dwellinghouse at Kinblethmont, Arbroath has received Building Warrant approval and tenders have been issued. Work is continuing on Building Warrant drawings for the proposed upgrade of visitor facilities for Scone Palace.



- Braemar Highland Games Centre -



## Conservation News

Current conservation projects include: St Mary's Monastery, Perth; Kindrochit Castle, Braemar; Angus Folk Museum, Glamis; High Mill Verdant Works, Dundee; Gilfillan Church, Dundee; The Roods, Kirriemuir and the Category B Listed Finavon Doocot.



- High Mill, Verdant Works -

We received a non-conditional Listed Building consent for the A listed Verdant Works High Mill, Dundee open gallery project. Property appraisals for seven historic structures in South Aberdeenshire including the Mercat Cross, Inverbervie; the Steeple, Drumlithie; the Old Parish Church, Tarland; Tullich Kirkyard, Ballater; the Mercat Cross, Old Rayne; St Dronstan's Kirkyard, Insch and St Carol's Church, Ruthven.



- The Steeple, Drumlithie -



- Angus Folk Museum, Glamis -

## Aberdeen Office

In last Winter's newsletter we were delighted to announce the opening of our new office in Aberdeen. Who could have predicted what a beneficial move this would be for JFSA? Since opening this third office in February 2103 we have been working closely with the Diocese of Aberdeen on several ecclesiastical projects ranging from locations in Aberdeen City, Inverness and Lerwick to Tombae at Tomintoul. Partners Fred, Doug and Paul are all involved in these projects. We also have projects underway at Stonehaven and Braemar.



- The Cathedral, Aberdeen -

## Miscellaneous Snippets

Hot on the heels of our work at the Aquaculture Centre at Stirling University, we have been commissioned to carry out alteration work to Scion House on the Innovation Park to form some dedicated office space for research specialists. This involves the formation of new cellular offices, open plan office space and a meeting room facility.

We are currently preparing sketch proposals for internal alterations at St Mary's RC Church in Inverness for the Diocese of Aberdeen.

Works are programmed to commence in January on some alterations and extensive internal refurbishment works at Coldsid Parish Church in Dundee. The project also involves a substantial amount of external building fabric repairs.

Works are also underway to completely refurbish and substantially upgrade the first floor of our office premises in Stirling. Works are programmed to be complete in January and the premises will be available "to let" from this time.



- The Old Smiddy, Glamis -

## On Site

Projects currently On Site include the Homelands development at Lundin Links, Fife, due to be completed in Summer 2014; proposed alterations to an existing farmhouse at Kingsbarns; alterations to office at 5 Viewfield Place, Stirling and a new Visitor Centre on the Isle of May in the River Forth making deliveries to site interesting to say the least as shown below!



- Leven Road, Lundin Links -



- Deliveries to the Isle of May Visitor Centre -

## Office Spaces to Let

To any of our readers who know of someone looking to expand or relocate we have high quality modern office space available for lease on the upper floor of our new build Milton Studio in the picturesque and historic village of Glamis. (see right). Also, our long term tenant has vacated the 1st floor office space at 5 Viewfield Place, Stirling and we have taken the opportunity to refurbish and substantially update this office accommodation. You can find this on our website or Google maps. Enquiries from potential tenants are very welcome.



## Staff Matters



NEW BABIES!! Papa Fred and Granny Rosemary are delighted to announce the arrival on 24 February of their FOURTH grandchild. Congratulations to David & Elaine Stephen on the birth of their baby daughter Mia, a baby sister for Dillon. Grandad Doug had a fantastic day this year as his first granddaughter, Georgia Carolyne was born on his birthday, 24 April weighing in at 7lbs 15oz. Congratulations to Mum and Dad, Allan & Lynsey Reid.

Congratulations to our technician, Iona Ferguson on her engagement to Robin Bandeen in Portugal on her birthday in September this year.

Of the three charmers (pictured L-R below) - Steven Anderson, Associate in our Stirling office has successfully achieved his MCIAT Chartered Architectural Technologist. Senior Technician, Les Smith, is 60 years young this year and Allan Reid celebrated his 30th birthday in September. Congratulations to all on achieving these milestones.



Head Office:  
Milton Studio, Glamis, Angus DD8 1RG  
t: 01307 475000

Also at:  
Milton Studio, 5 Viewfield Place, Stirling FK8 1NQ  
t: 01786 446939

52 Bon Accord Street, Aberdeen AB11 6EL  
t: 01224 471414

Partners:  
Prof James F Stephen  
Rosemary C Stephen  
Douglas J Reid  
Paul Stephen  
David Stephen

Associates:  
Steven Anderson  
Andrew A Smith

Consultant:  
Roy Clark

## Client Comments

A feasibility study for a residential development at Rossiebank, Kirriemuir had our delighted client commenting that "the service was efficient from start to finish". Other recent client comments have praised our "professional approach which is the fundamental reason we return on a regular basis to engage the services of James F Stephen Architects" and also a contractor client commented on our "particular attention to detail on any project" and that we "always provide comprehensive and robust tender and construction information whilst at the same time meeting challenging project deadlines/timescales".

## Social Networking

Follow events at JFSA on:

Facebook, Twitter & LinkedIn



Merry Christmas to all our staff, clients, fellow consultants and friends.

Best Wishes for a successful and fulfilling year ahead in 2014

Fred, Rosemary, Doug, Paul & David